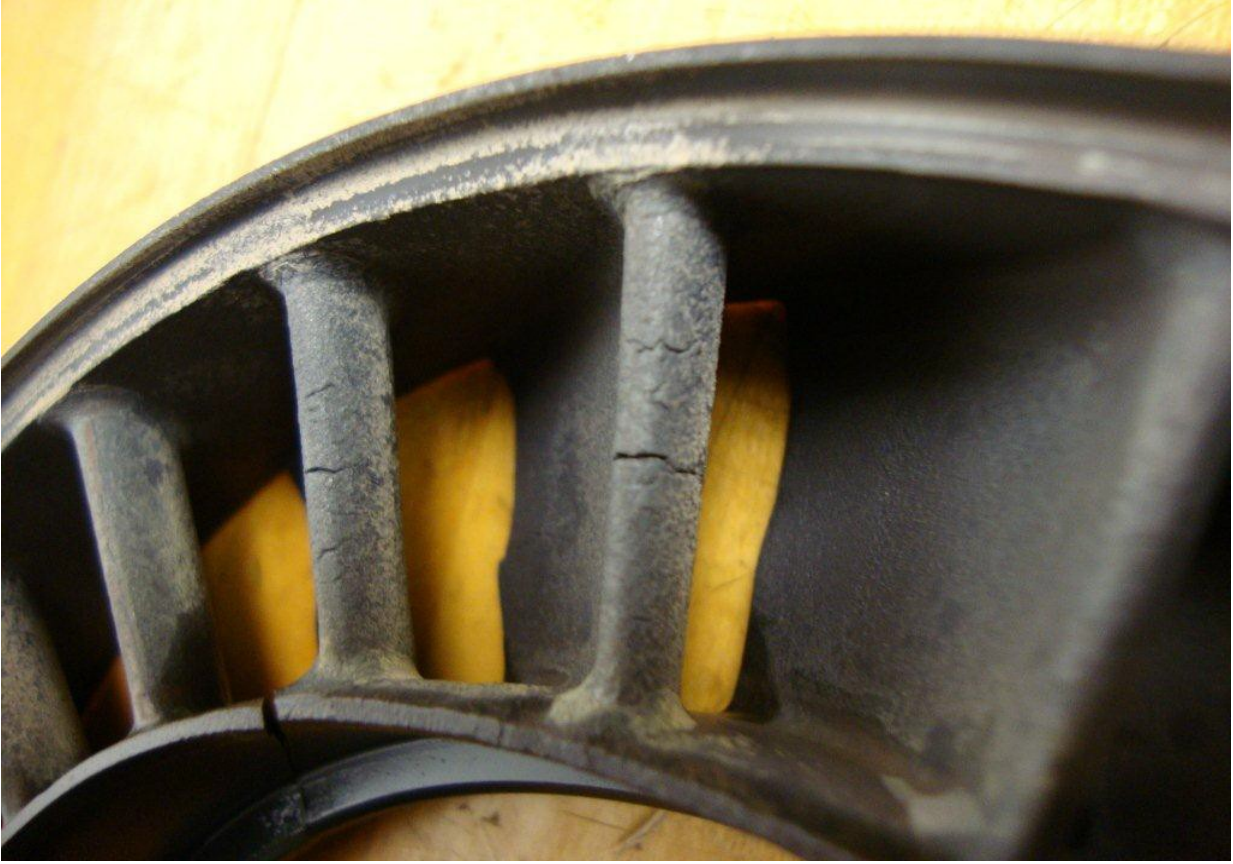


Turbomeca, Arrius 2B2, Cracked Guide Vane(s), ATA 7250

A technician for a corporate operation says, "While performing disassembly of this engine for a rear bearing oil pipe leak, (I) found damage to the following components, including: a PT nozzle guide vane cracked (HP segment, assembly P/N 0319217910); an HP nozzle guide vane cracked (P/N 0319218310); the flame tube cracked (P/N 031917850); Diffuser with FOD (P/N 0319210050; and the T-4 harness broken. All of these parts are being replaced." *(Additional listed parts: Module 2 P/N: 70EM027070 with cracked guide vane P/N 1319411580.)*



Turbomeca, Arrius 2B2, Cracked Guide Vane(s), ATA 7250



Turbomeca, Arrius 2B2, Cracked Guide Vane(s), ATA 7250



Turbomeca, Arrius 2B2, Cracked Guide Vane(s), ATA 7250



Part Total Time: 4,763.0 hours